

STANDING SEAM ROOF  
 PREFABRICATED  
 DRIP EDGE

6" GUTTER

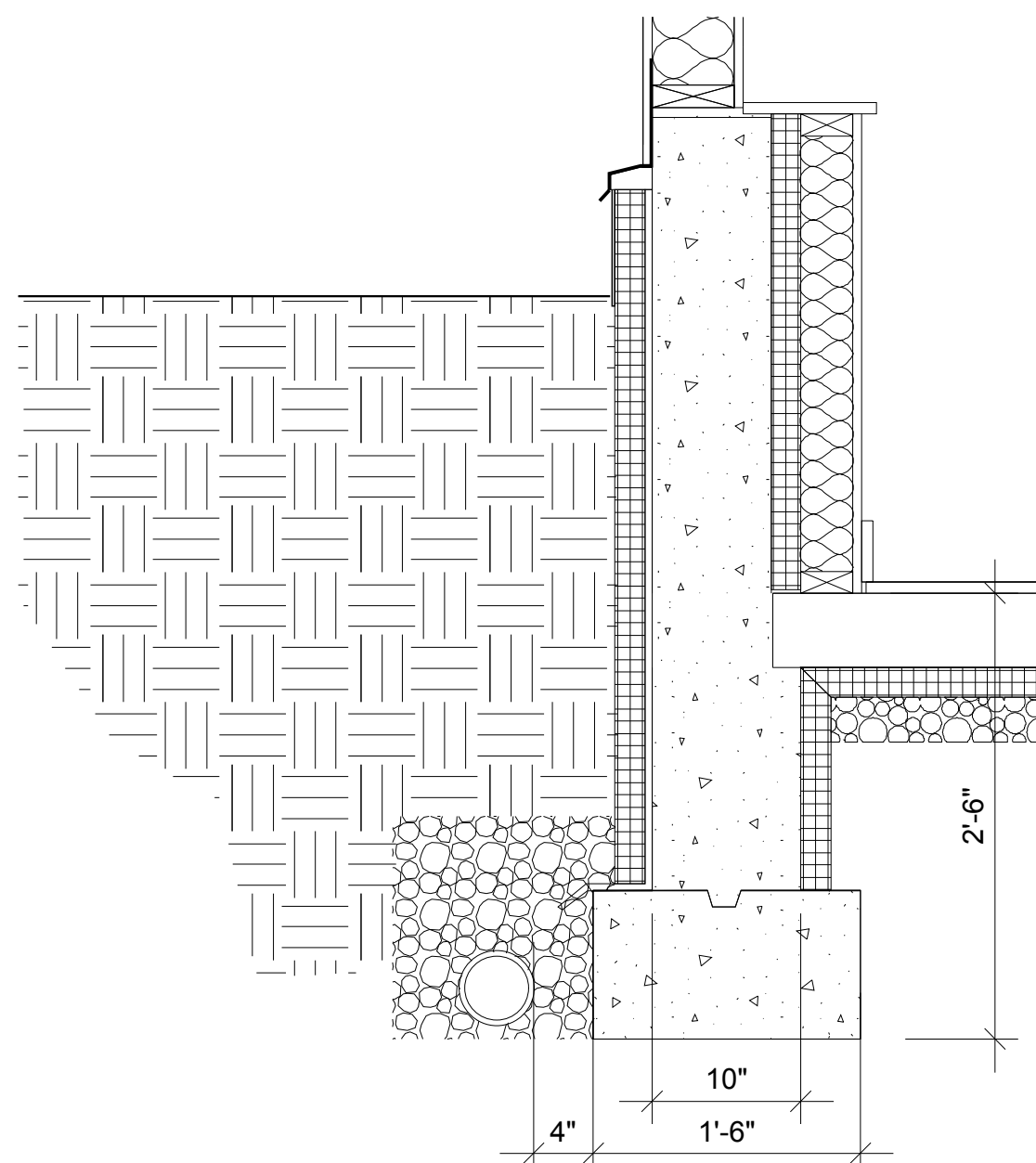
PAINTED FASCIA BOARD  
 AND SOFFIT

CONTINUOUS SCREENED VENT  
 8" R-6.5 CLOSED CELL SPRAY  
 INSULATION

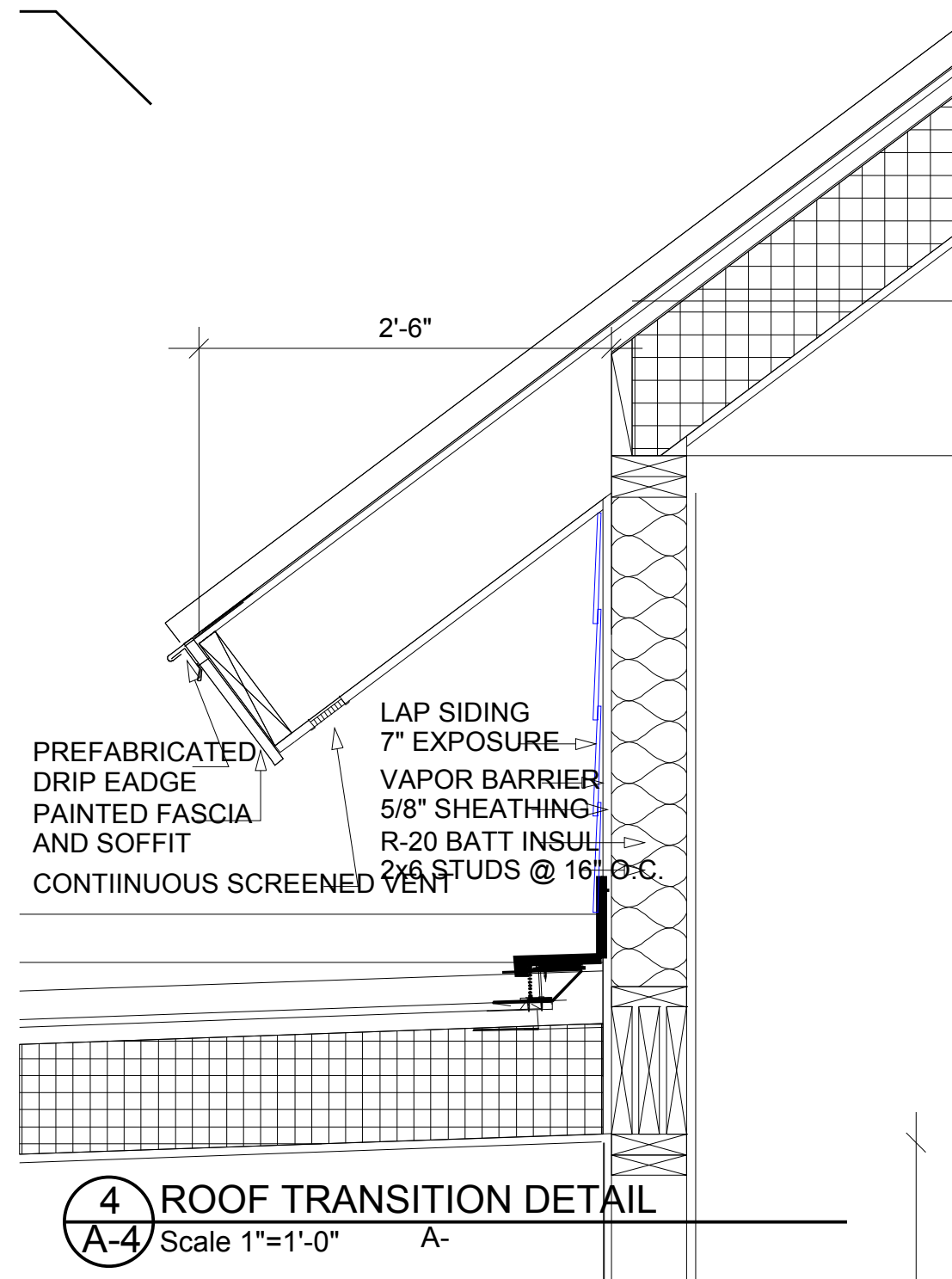
1'-0"

**1** EAVE SECTION DETAIL  
 A-4 Scale 1"=1'-0" A-

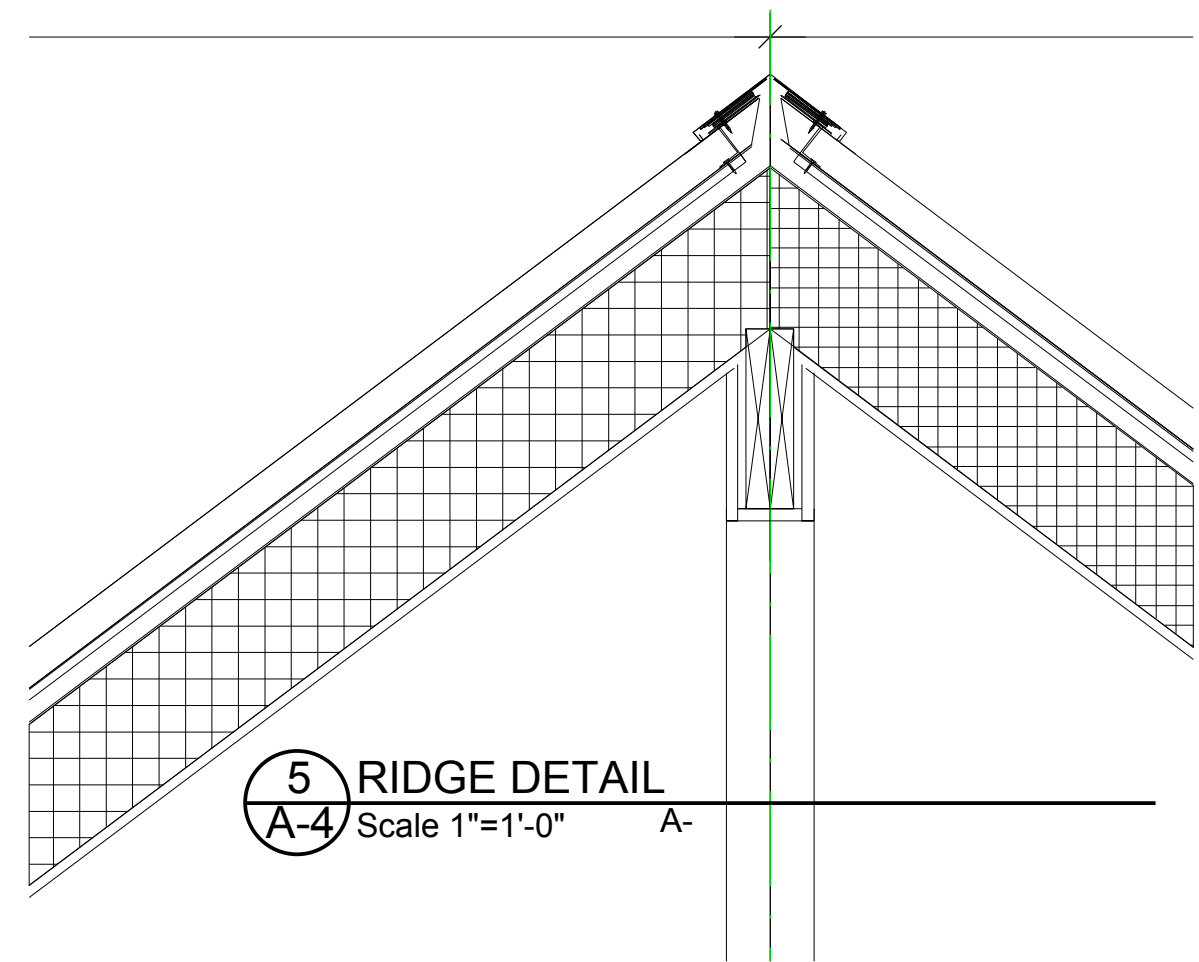
**2** 1st FLOOR DETAIL  
 A-4 Scale 1"=1'-0"



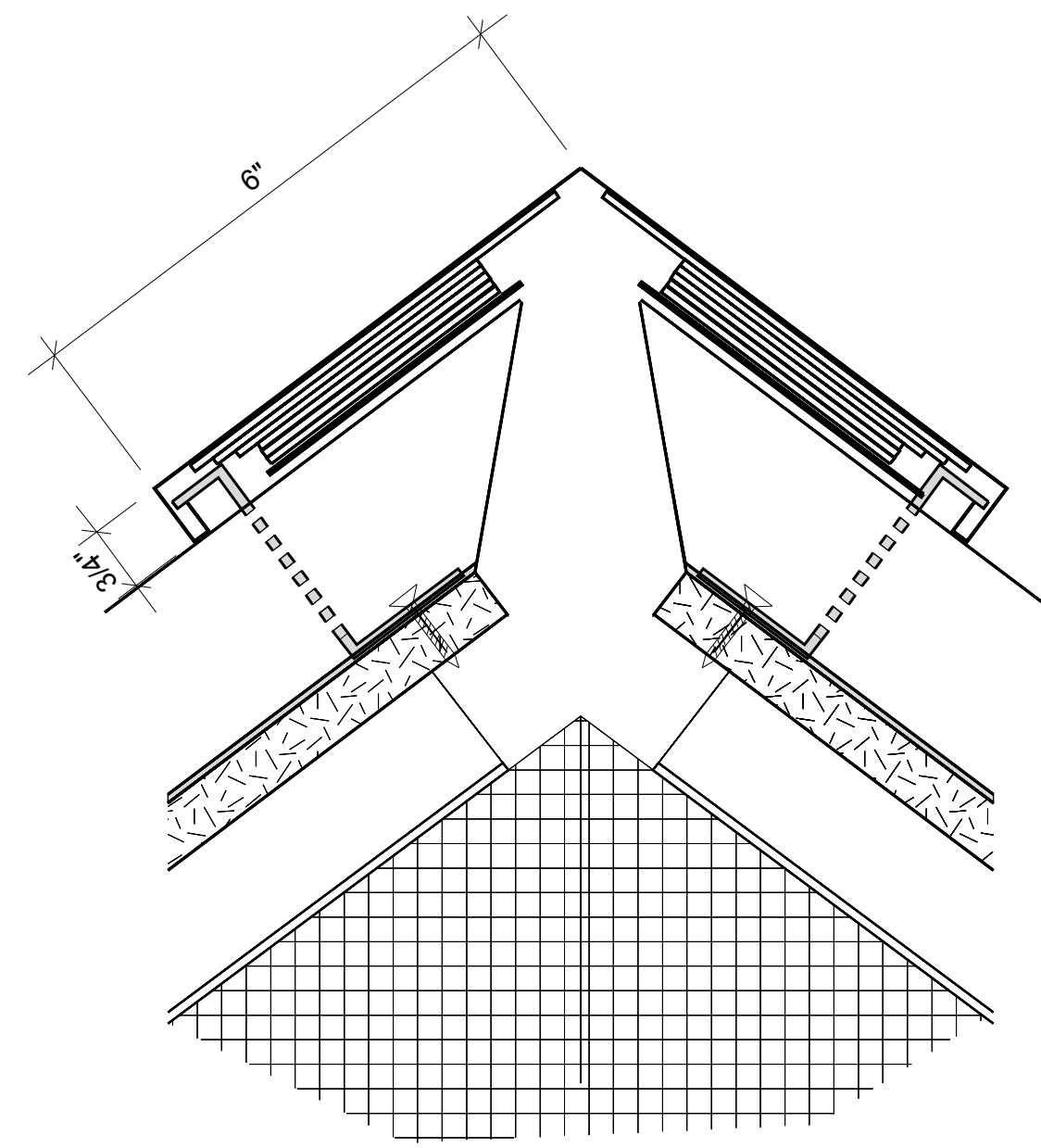
**3** FOUNDATION DETAIL- SOUTH WALL  
 A-4 Scale 1"=1'-0"



**4** ROOF TRANSITION DETAIL  
 A-4 Scale 1"=1'-0" A-



**5** RIDGE DETAIL  
 A-4 Scale 1"=1'-0" A-



**4** RIDGE-VENT-DETAIL  
 A-4 Scale 6"=1'-0" A-

Exires 11/30/2018

**MacLaren  
 Residence**

51 FAIRVIEW LANE  
 SPRINGFIELD IL

Architect:  
 Robert E. Edmonds  
 7158 Waterman Ave  
 St. Louis, MO 63130  
 314-324-9333  
 reedmonds@yahoo.com